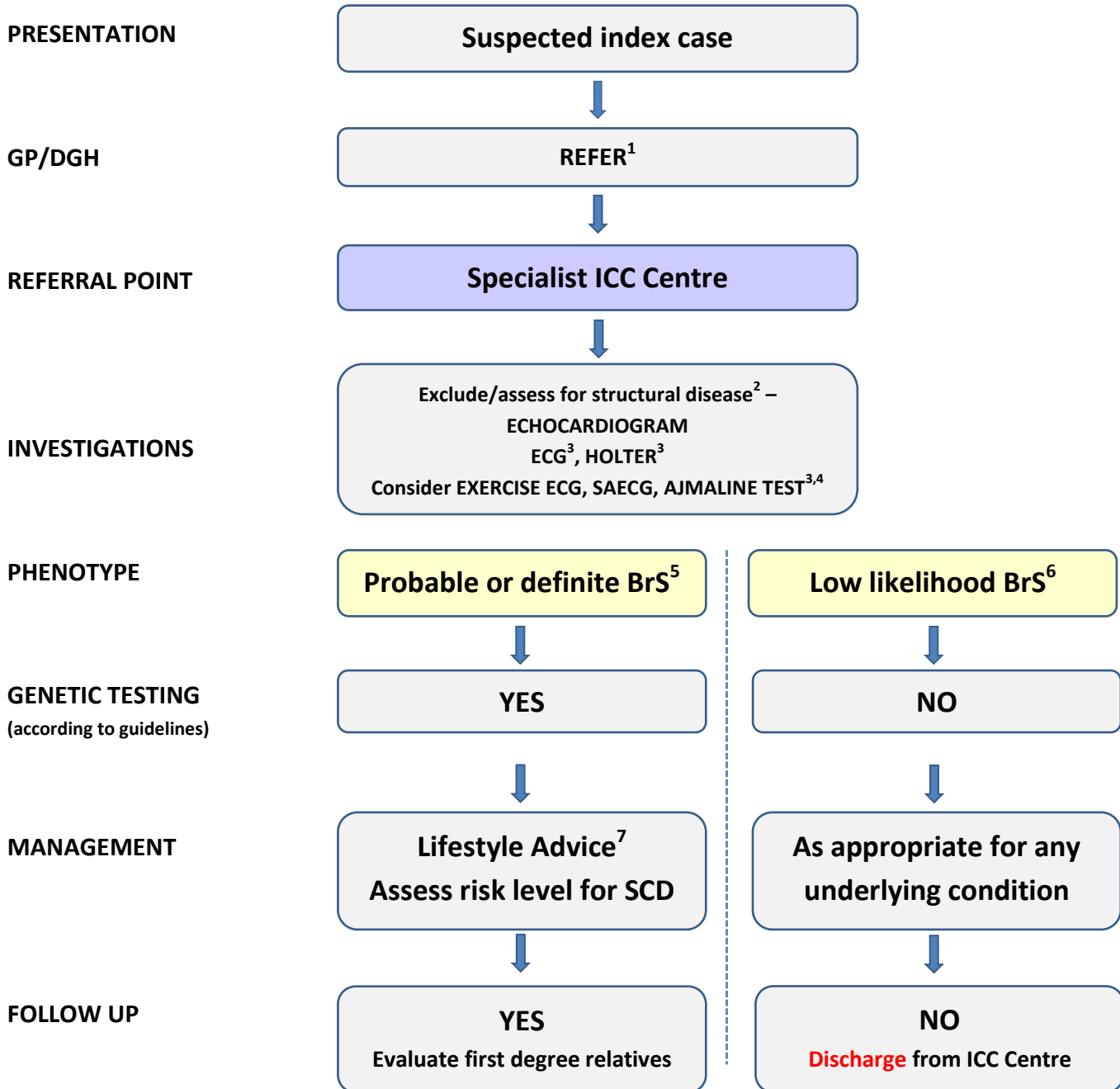




Association for Inherited Cardiac Conditions

CARE PATHWAY BRUGADA SYNDROME (BrS) – INDEX CASE



Notes:

1. Urgent referral if unexplained syncope or arrhythmia symptoms
2. Consider cardiac MR and coronary angiography
3. ECG, ajmaline test and Holter should have high right ventricular leads
4. Flecainide can replace ajmaline but is not ideal due to lower sensitivity
5. Brugada type 1 ECG pattern present spontaneously or with ajmaline
6. Brugada type 1 ECG pattern absent even after ajmaline test
7. List of drugs to avoid: www.brugadadrugs.org ; Treatment of pyrexia.