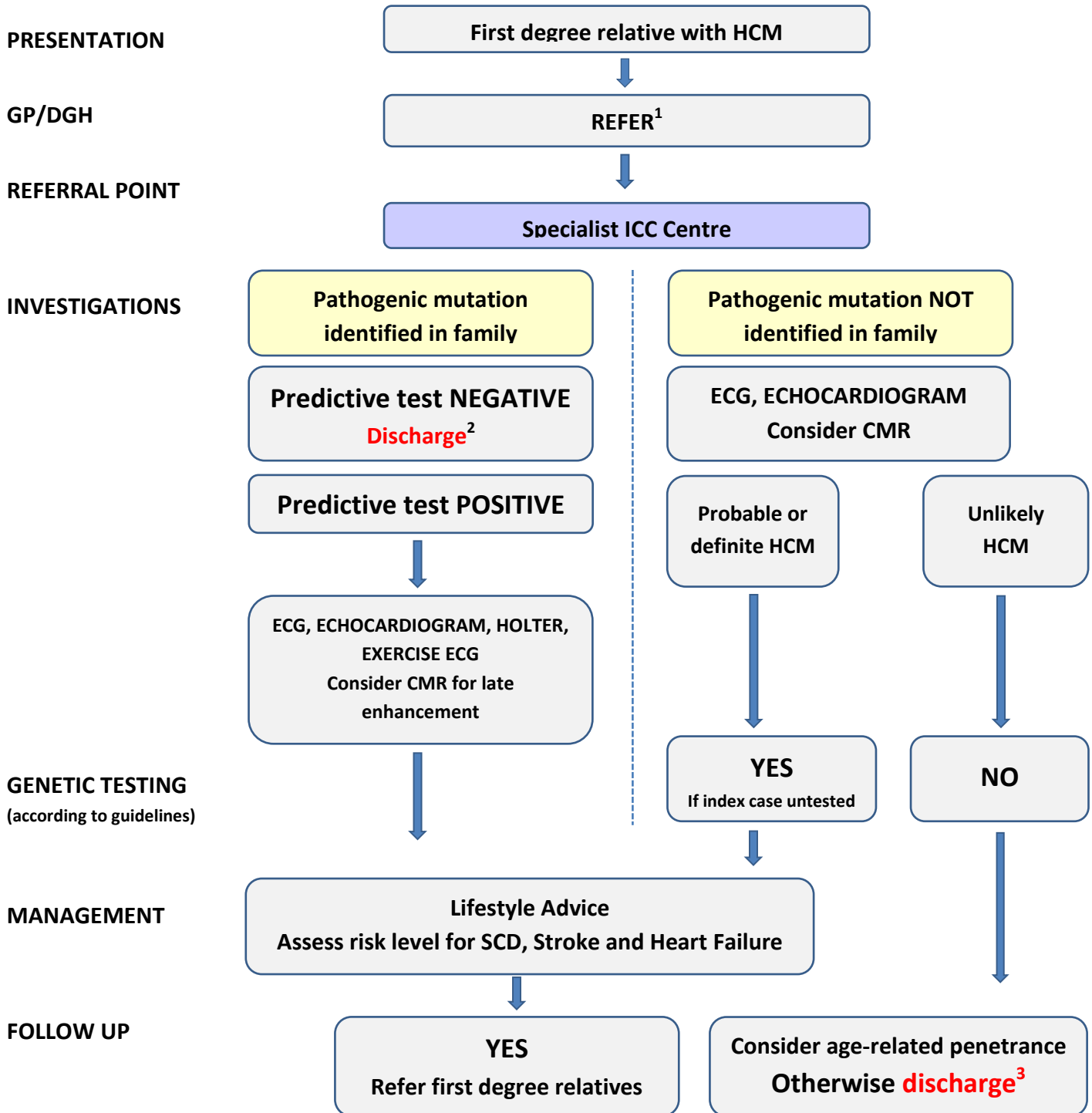




Association for Inherited Cardiac Conditions

CARE PATHWAY

HYPERTROPHIC CARDIOMYOPATHY (HCM) – FIRST DEGREE RELATIVE



- Notes:**
1. Urgent referral if unexplained syncope or arrhythmia symptoms
 2. If unequivocal pathogenic mutation
 3. Unless relevant symptoms

OTHER RELATIVES: Seek ICC service advice. Refer obligate carriers and individuals with syncope or arrhythmia.